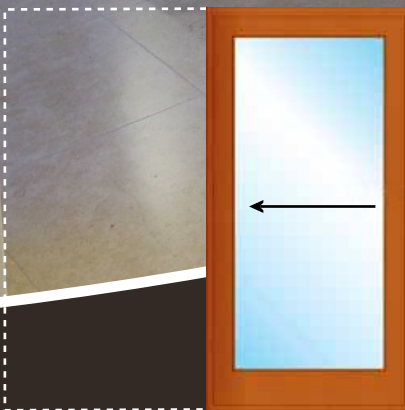


*Make your first  
impression last*

# internal cavity sliding doors



The door slides  
away inside the  
wall to create  
extra space

Make the most of the valuable space inside your home by installing timber internal cavity sliding doors. The door retracts completely inside the cavity to create a 100% opening that maximises your space.

- ✓ Custom-built to your requirements
- ✓ Suits single and double openings
- ✓ Create openings up to 3.6m wide
- ✓ Unique track with flush-head detail
- ✓ Concealed ball-bearing base guide
- ✓ Sleek, clean lines and appearance
- ✓ Smooth, easy operation

*Cedar West*

t | 1300 233 279

e | sales@cedarwest.com.au

cavity sliding doors

# internal cavity sliding doors

Our internal cavity sliding doors create a 100% opening to provide unobstructed access to the room. When the door is not required, it simply glides away inside the wall and is almost hidden from view.

Cedar West uses a minimal clearance, top-hung track system for a streamlined finish. This unique track enables the doors to be easily removed without taking out the linings (in most applications). Our internal cavity sliding doors also incorporate a concealed ball-bearing guide at the base for quiet, smooth operation.



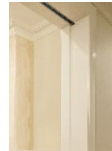
## Choice of Frame Styles

We offer the following frame options:

(1) Track recessed into beautiful solid timber lining.

Available with either traditional architrave or contemporary shadowline effect trim.

(2) Track flush mounted to ceiling. The mechanism is installed above the ceiling line so all that can be seen is the elegant, clean lines of the track. Available with either no linings or vertical timber linings.



timber linings (architrave)



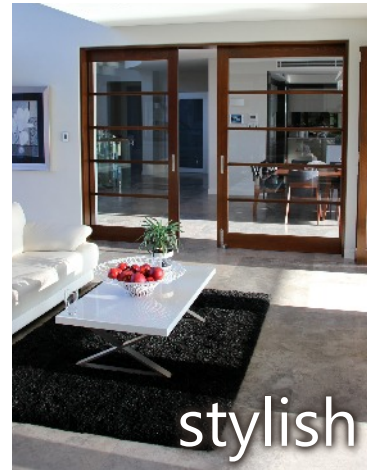
timber linings (shadowline)



flush mounted (no linings)



flush mounted (vertical linings)



## Timber Choices



Western Red Cedar



KD Hardwood



Other timbers on request

## Profile Options



Ogee (standard)  
Max glass thickness 6.38mm



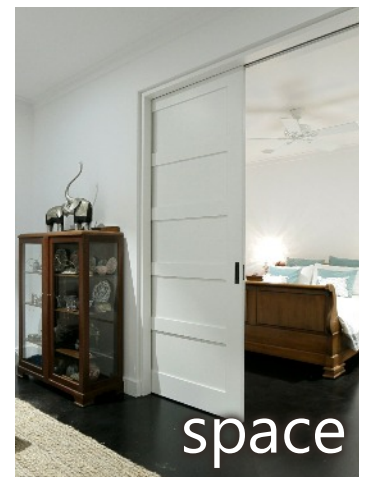
Jays (traditional)  
Max glass thickness 10.38mm



Square Edge (modern)  
Suitable for single or double glazing

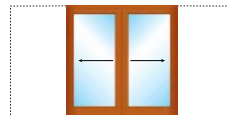
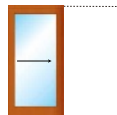
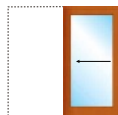
## Data & Specifications

- Custom-made from solid timber to suit your requirements.
- Can be used with a wide range of Cedar West doors.
- Suitable for single and double door openings. Maximum size: single - 3000mm (h) x 1800mm (w); double - 3000mm (h) x 3600mm (w).
- Required cavity width 65mm. Suitable for double-brick and stud walls.
- Premium quality Cedar West track system with flush-head detail included. Door can be removed after installation without taking out the linings (in most applications).
- Concealed ball-bearing guide at the base of door. The ball-bearing mechanism slides inside a channel cut into the base of the door. The channel is fitted with a nylon insert for quiet, smooth operation.
- Choose from two frame options: (1) track recessed into timber lining (natural or painted finish) with either architrave or shadowline; or (2) track flush mounted to ceiling with vertical linings or no linings.
- Support LVL beams supplied and installed by Cedar West. Range of reveal lining options available.
- Customised hardware solutions to suit your application.
- Available in raw timber or factory undercoated in white or grey.
- Full installation service available.



## Detailed Drawings

Available in the following configurations:



## Specify this Product

Include

**Cedar West Solid Timber Internal Cavity Sliding Doors**

in your specification.

View our website for further details:

[cedarwest.com.au/  
internal-cavity-sliding-doors](http://cedarwest.com.au/internal-cavity-sliding-doors)



t | 1300 233 279

w | [cedarwest.com.au](http://cedarwest.com.au)

e | [sales@cedarwest.com.au](mailto:sales@cedarwest.com.au)